

ZeeConf

A complete **management console** for your ZeeTerm endpoints



What is ZeeConf ?

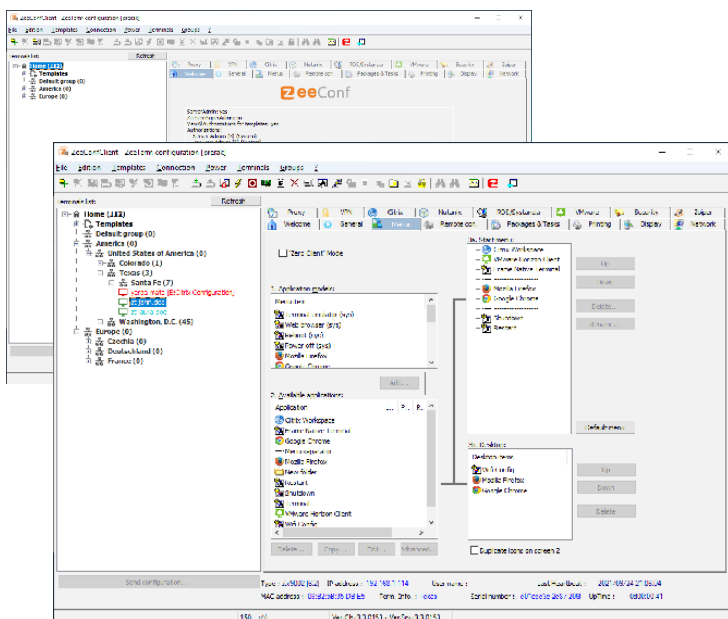
ZeeConf is the **centralized console** for managing your ZeeTerm workstations. It helps you performing actions directly on ZeeTerms within a few clicks.

The objective is to both simplify and improve IT operation and free up helpdesk teams. ZeeConf offers you the ability to do **remote support**: issues can be solved in a few clicks and within minutes. Moreover, firmware updates can be deployed almost instantly from the management console.

ZeeConf comes complimentary with every ZeeTerm endpoint Thin or Zero Client, no matter if the ZeeTerm endpoint is a hardware acquired from ZeeTim or a PC that has been converted into a ZeeTerm endpoint through the ZeeTransformer tool.

Benefits

- **Save time** for your IT teams from constant patching, and maintaining antivirus tools,
- Configure your ZeeTerm in a few minutes thanks to ZeeConf: **“Zero Touch Deployment”** workstation,
- **Single point of connection**, from which thousands of devices can be managed and supported locally, anywhere in the world,
- No need to manage each workstation individually or send support teams to remote sites anymore,
- Perfect pick for **multi-site organizations** and decentralized agencies,
- ZeeConf remains accessible even with a standard Internet connection, out of the company network,
- No need for a VPN, your teams can securely manage their ZeeTerm fleet and benefit from ZeeConf features even when working from home or from external sites,
- **Fully included** when purchasing a ZeeTerm device or a ZeeTransformer license.



They use ZeeConf



Technical characteristics

PREREQUISITES	
ZeeConf Client Module	<ul style="list-style-type: none"> ZeeConf Client works with the following OS versions : <ul style="list-style-type: none"> * Windows Server 2016 and above * Windows 10/11 32 and 64 bits compatibility Minimum of 50 MB free space on the disk
ZeeConf Server Module	<ul style="list-style-type: none"> ZeeConf Server works with the following OS versions : <ul style="list-style-type: none"> * Windows Server 2016 and above * Windows 10/11 64 bits compatibility Minimum of 2 GB free space on the disk Active Directory Service
Database	<ul style="list-style-type: none"> Microsoft SQL 2017 or above (recommended) SQL Lite
FEATURES	
Configuration	<ul style="list-style-type: none"> Possibility to define template configurations Send remote configurations Export of configurations on a terminal Automatic launch of an application when starting
Endpoint Management	<ul style="list-style-type: none"> Fleet management Secure communication through SSH Creation and definition of endpoints groups Management by groups of endpoints or individually On-the-go configuration for a terminal or a group of endpoints
Package Management	Download, install, modify, and remove packages
ZeeConf Web Management Console	<p>Web interface displaying following indicators:</p> <ol style="list-style-type: none"> Number of active and switched on ZeeTerms (per model or in total) Visualization of newly created ZeeTerms List of all ZeeTerms Visualization of ZeeTerm groups in tree form Different templates available with status (applied, pending, etc.) Visualization of all available packages and corresponding ZeeOS versions ZeeConf Server details Managing authorization groups Management of access tokens List of ZeeTerms in error states
Graphic Customization	<ul style="list-style-type: none"> Display management according to screen resolution Screen standby and refresh management rule Configuration of menu bar and customization of desktop and background Keyboard settings (AZERTY, QWERTY)
Network	<ul style="list-style-type: none"> DHCP or manual management Proxy server configuration
Assistance	<ul style="list-style-type: none"> Remote control via connection to a ZeeTerm
OPTION: Printer Management thanks to ZeePrint complementary solution	<ul style="list-style-type: none"> Add, edit and delete printers Definition of printer categories
OPTION: MFA thanks to complementary solution ZeeOTP	<ul style="list-style-type: none"> Multi-factor authentication via the generation of an OTP token

Main features

Tight control of your ZeeTerm fleet

- Manage all aspects of the end-user workstation, including desktop, start menu and taskbar or lock down the workstation to a kiosk mode.
- Easily create configuration templates that you can store and apply to individual ZeeTerm endpoints or groups.
- Role-based administration to delegate management of certain groups of ZeeTerm endpoints.
- ZeeConf is a highly secure solution, thanks to the encryption of all communications.

Gain great insight and visibility with a web reporting tool

ZeeConf Web Management Console is a web based interface displaying key indicators of your ZeeTerm fleet: latest version of packages installed, latest updates installed, various authorizations, access settings, etc.

